

# How To : Use the EOS tool

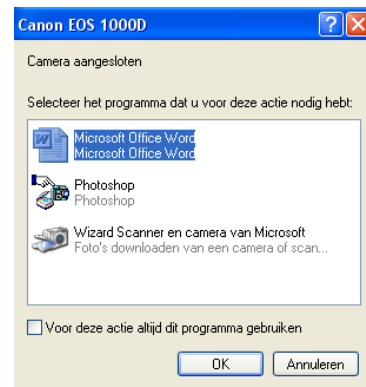
## Introduction

The EOS tool is a separate tool that allows you to fine-tune your Canon EOS camera settings.

## Step 1 : Connecting the camera

In Photomatic mode the camera is always connected to the ID station. Connect the camera to the ID station using an USB cable. You may use an USB hub to add USB ports if necessary. After you have connected the ID camera turn the camera ON. A pop-up window will appear:

Ignore this pop-up, just cancel it. Now the ID station is connected to the camera . Now you should set the ID station software to work with the Canon camera in Photomatic mode.

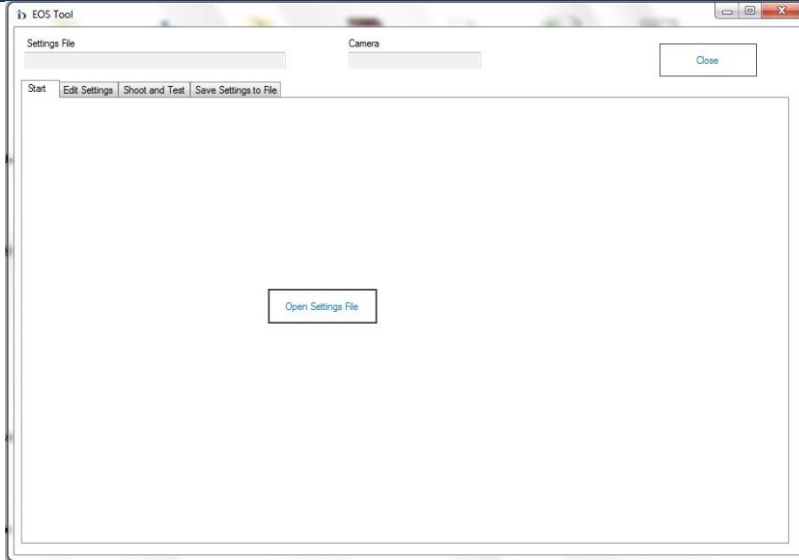


## Step 2 : Configure the camera

Start the EOStool.exe from your desktop. You will not find the tool inside the Photomatic software, but as an installed program on your tablet or ID station computer. So exit the Photomatic software and start the EOS tool from windows.



Click on ***Open Settings file*** and browse to:  
C:\PhotoMatic6\Config\EosCameraSettings.xml and open this file



Be sure that the wheel on the camera is set the same as the shooting mode in the tool of your desire.

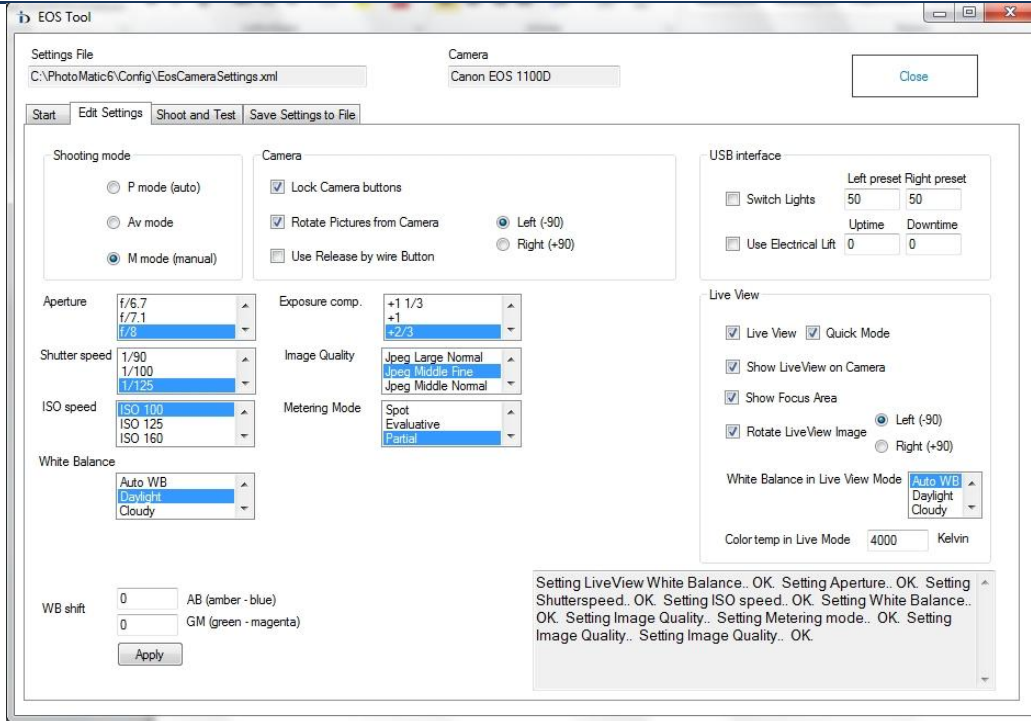
From this point we can start with configuring the settings of the EOS camera.

The main issue is to decide which *camera shooting mode* to use:

- Manual program mode
- Auto program mode
- Av program mode

If you are using external Flash equipment you should select Manual mode. Otherwise, use the Auto mode or the Av mode. The Av mode is useful when you want to preserve depth-of-focus by setting the Aperture value to a fixed value while the camera calculates the best shutter speed.

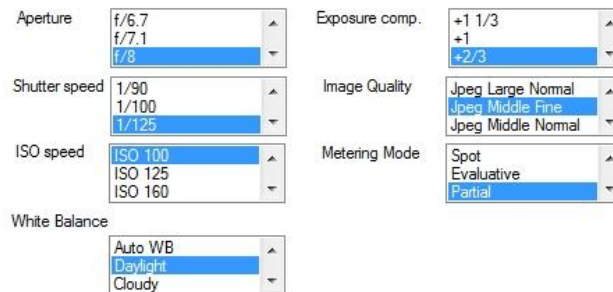
If you are familiar with this topic, you are advised to read the user manual of the Canon EOS camera, in which the various camera program modes are described.



After selecting the appropriate camera mode, sets the various other options as described below:

### Camera preset

The camera preset settings determine the cameras Aperture, Shutter Speed and Exposure compensation settings during the capturing of images. Every picture will be taken with these settings. So, if your pictures are overexposed, you should adjust these settings.

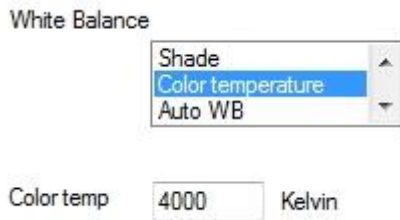


In **manual mode**, set the “Manual Aperture” and “Shutterspeed” settings. Use only values that are supported by the EOS camera. In manual mode you can also adjust the setting of the live view image. These settings only apply to the live view image and NOT to the actual captured image. You may change the live view settings to make the live view image stream more bright.

In **Av mode** the Av Aperture field sets the fixed Aperture value. Again make sure the Aperture is supported by the camera. The camera will calculate the best shutter speed every time a picture is taken. You can use the exposure compensation by checking the Exp. Comp. check box.

In Auto mode the camera calculates aperture and shutter speed. So the only settings that will apply here are the exposure compensation presets.

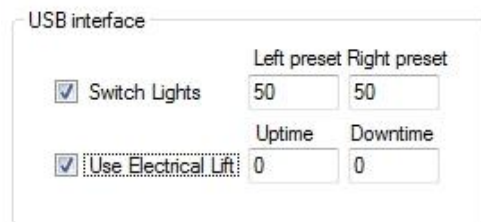
### Camera White balance



Set the camera white balance to the appropriate mode. External flash equipment usually generates Daylight. Otherwise, choose Color Temp and set the color temperature of your lighting equipment. If this doesn't work, choose Auto WB. If you would like to set the Color temperature by yourself, select Color Temperature in the list and set the Kelvin degrees in the screen that appears.

### Auxiliary USB devices

ID station has an optional USB controller that allows you to turn lights on and off and to control an electrical lift, mostly used in electrical pole systems. If you are using the decide make sure to enables these features here.



### ISO settings

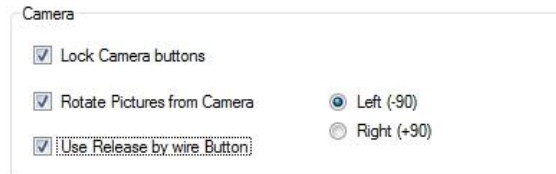
The sensitivity of the ID camera is set using the ISO option. When using external flash equipment, set this to 100 ASA. In Av mode or Auto mode, set the ISO level to the a higher level, depending on the intensity of the continuous light equipment. You may use the Auto mode, if conditions are not constant.



## Camera controls

With the **Lock camera buttons** option, you will block all the buttons on the camera, so that none of your employees can mess around with the camera settings.

With the **Rotate Pictures from camera**, you can set the pictures orientation in Left (-90) or Right (+90).



The **Use Release by Wire Button** is only used with DPS ID cameras, placed in a bracket and a separate release button. Check this box only if you have such solution.

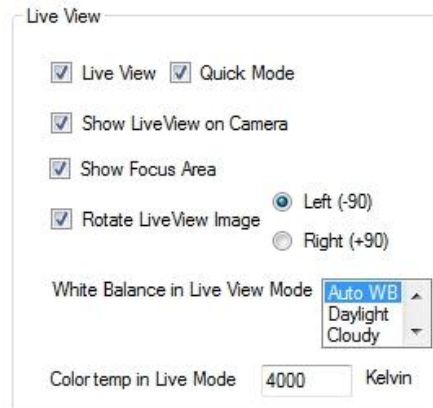
## Live view

The **LiveView** option is checked by default. The Live View feature shows the camera view live on the display of the ID station, a very nice feature. Click on the EOS Live View button to change the settings of the cameras Live View mode.

The **Show LiveView on camera** option is checked by default. This enables the LiveView on the camera display.

The **Show Focus Area** option will show the focus grid on the screen of the camera.

With the **Rotate LiveView image** option you can rotate the display of the camera Left (-90) of right (+90)



All other options are straightforward and can be set if appropriate to your situation. Otherwise, leave them at their default values

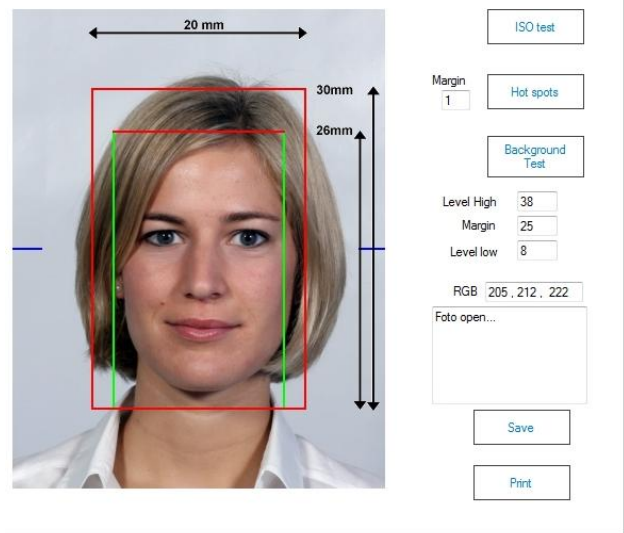
## Shoot and test

Click on the shoot and test tab to start taking picture after setting the camera.

Use the **Capture** button to take pictures. After taking a picture, the software will crop and cut out the face according to the default country template.

With the **ISO test** button, you can see the result of the ICAO/ISO test of the pictures. This information will help you to fine-tune your lighting and camera settings.

With the **Background test** you can measure the RGB values of the background by moving the cursor over the picture. By clicking the button will change the background to the RGB color that is set in the country template.



With the **Hot spots** button, you can let the software measure the amount of hotspots on the picture. The result will be shown in the info box.



### Save settings to file

When you are finished configuring you camera, just click on the **Save Settings to file** tab. Click on the Save settings to file button and save the file:

C:\PhotoMatic6\Config\EosCameraSettings.xml

Overwrite the old file.